

Pall-Fit Retrofit Elements for 3M* High Flow Filters

Pall's retrofit filters allow users of 3M High Flow filters to benefit from Pall technology via a direct 'drop in' replacement for existing elements. Pall-Fit retrofit filters provide the performance and value you have come to expect from Pall.

Switching to Pall is simple

Pall-Fit retrofit elements fit directly into 3M High Flow filter housings without the need to change or modify the housing. It's an easy decision to make, and requires little effort from the operator.

Pall-Fit retrofit filters feature:

- High performance filtration in 8 media grades
- Laid over pleat design for long service life
- Multiple seal options
- Competitive pricing

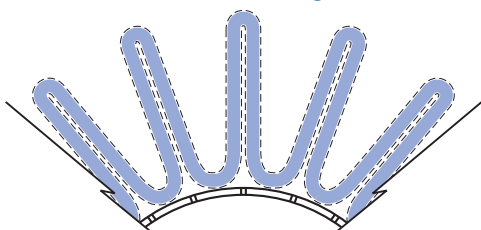
Specifications

- High efficiency melt blown polypropylene media with a long, proven track record of success in Pall's own High Flow elements
- Polypropylene end caps, core, drainage material, and outer wrap
- Effective filtration area
 - 57 sq ft for 40 inch element
 - 85 sq ft for 60 inch element
- Maximum Operating Differential Pressure: 50 psid (3.45 bar)
- Maximum Operating Temperature: 82°C (180°F) for compatibility in a wide range of fluids

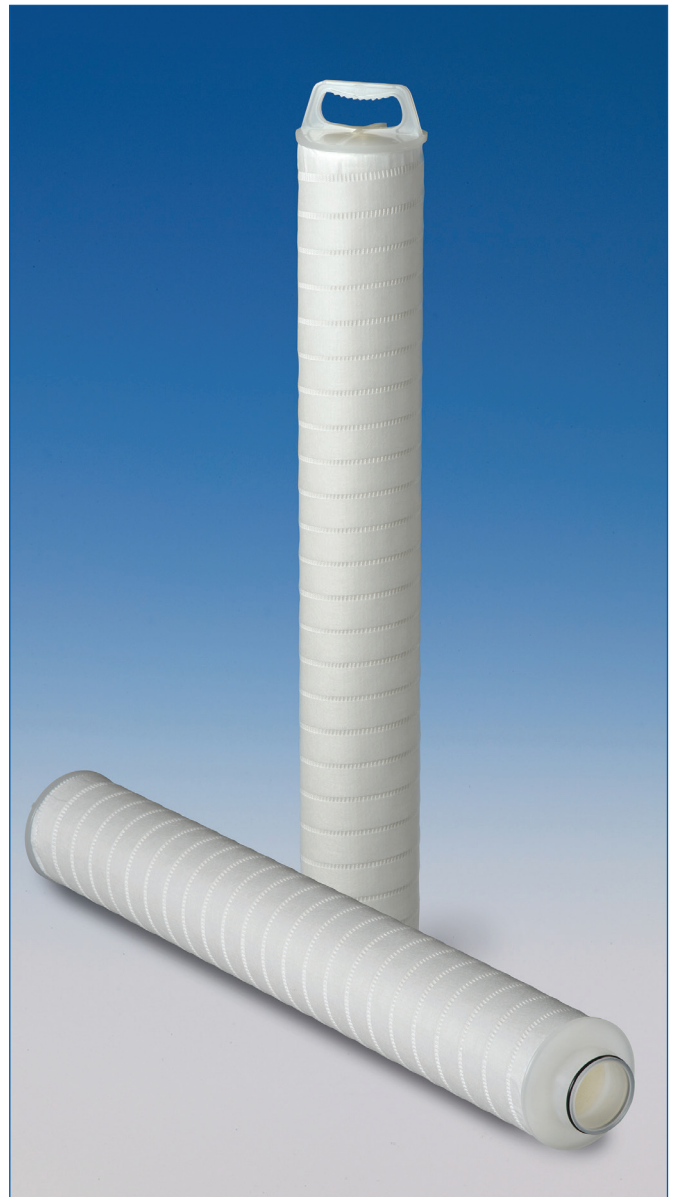
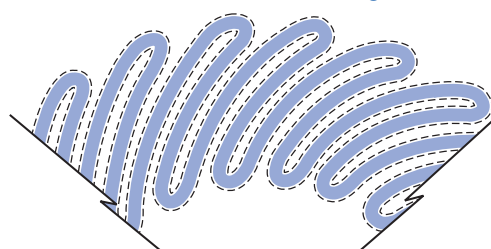
Laid-over-pleat design: Optimized for performance

- Laid-over-pleating maximizes filtration surface area within a given element envelope. It also enables uniform flow distribution through the filter element and, therefore, uniform dirt buildup within the filtration medium for extended filter service life.

Fan Pleat Design



Laid-Over-Pleat Design

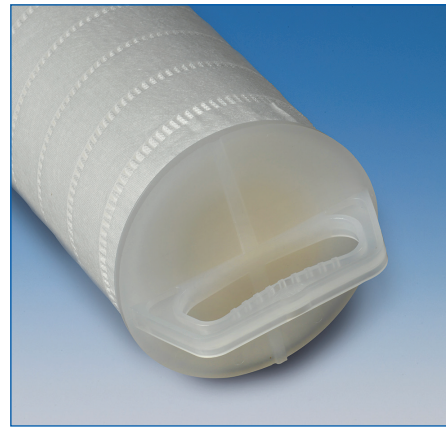
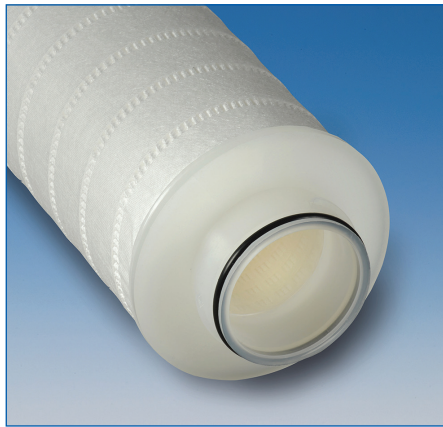
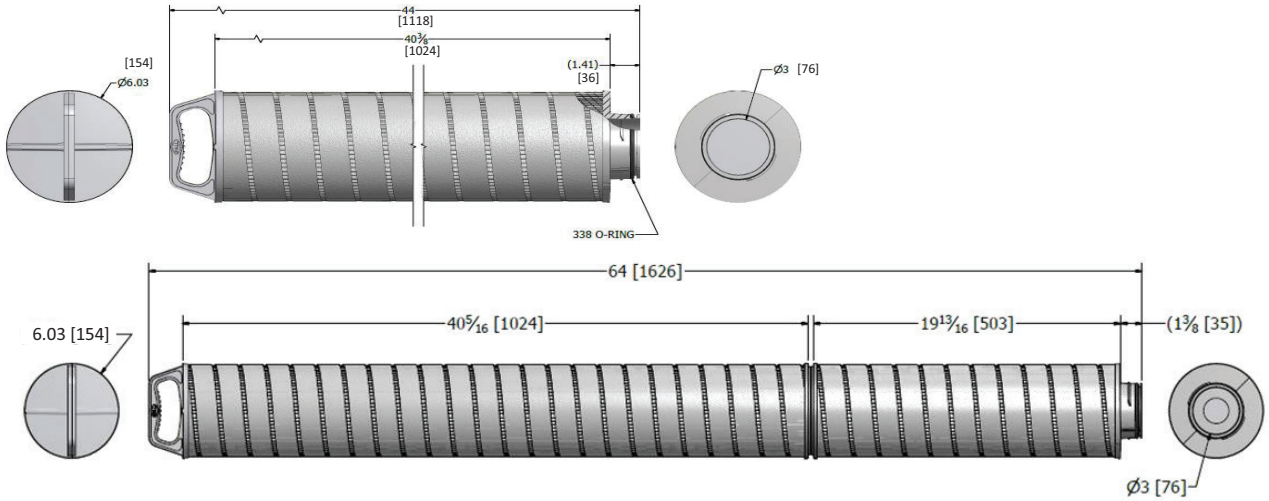


A wide range of filter element configurations

Pall-Fit retrofit filters are available for a wide range of 3M filter housings. With multiple filtration grades, seal options and lengths, Pall-Fit retrofit filter elements can easily be added to your system.

3M High Flow p/n	Pall-Fit Retrofit p/n	Length (inches)	Micron Rating (µm)	Seal
HF40PP001A	RPF009UY640S0010S	40	1	Silicone
HF40PP001B	RPF009UY640S0010V	40	1	Fluorocarbon
HF40PP001C	RPF009UY640S0010E	40	1	EPDM
HF40PP001D	RPF009UY640S0010N	40	1	Nitrile
HF40PP002A	RPF009UY640S0020S	40	2	Silicone
HF40PP002B	RPF009UY640S0020V	40	2	Fluorocarbon
HF40PP002C	RPF009UY640S0020E	40	2	EPDM
HF40PP002D	RPF009UY640S0020N	40	2	Nitrile
HF40PP005A	RPF009UY640S0050S	40	5	Silicone
HF40PP005B	RPF009UY640S0050V	40	5	Fluorocarbon
HF40PP005C	RPF009UY640S0050E	40	5	EPDM
HF40PP005D	RPF009UY640S0050N	40	5	Nitrile
HF40PP010A	RPF009UY640S0100S	40	10	Silicone
HF40PP010B	RPF009UY640S0100V	40	10	Fluorocarbon
HF40PP010C	RPF009UY640S0100E	40	10	EPDM
HF40PP010D	RPF009UY640S0100N	40	10	Nitrile
HF40PP015A	RPF009UY640S0150S	40	15	Silicone
HF40PP015B	RPF009UY640S0150V	40	15	Fluorocarbon
HF40PP015C	RPF009UY640S0150E	40	15	EPDM
HF40PP015D	RPF009UY640S0150N	40	15	Nitrile
HF40PP025A	RPF009UY640S0250S	40	25	Silicone
HF40PP025B	RPF009UY640S0250V	40	25	Fluorocarbon
HF40PP025C	RPF009UY640S0250E	40	25	EPDM
HF40PP025D	RPF009UY640S0250N	40	25	Nitrile
HF40PP040A	RPF009UY640S0400S	40	40	Silicone
HF40PP040B	RPF009UY640S0400V	40	40	Fluorocarbon
HF40PP040C	RPF009UY640S0400E	40	40	EPDM
HF40PP040D	RPF009UY640S0400N	40	40	Nitrile
HF40PP070A	RPF009UY640S0700S	40	70	Silicone
HF40PP070B	RPF009UY640S0700V	40	70	Fluorocarbon
HF40PP070C	RPF009UY640S0700E	40	70	EPDM
HF40PP070D	RPF009UY640S0700N	40	70	Nitrile

3M High Flow p/n	Pall-Fit Retrofit p/n	Length (inches)	Micron Rating (µm)	Seal
HF60PP001A	RPF009UY660S0010S	60	1	Silicone
HF60PP001B	RPF009UY660S0010V	60	1	Fluorocarbon
HF60PP001C	RPF009UY660S0010E	60	1	EPDM
HF60PP001D	RPF009UY660S0010N	60	1	Nitrile
HF60PP002A	RPF009UY660S0020S	60	2	Silicone
HF60PP002B	RPF009UY660S0020V	60	2	Fluorocarbon
HF60PP002C	RPF009UY660S0020E	60	2	EPDM
HF60PP002D	RPF009UY660S0020N	60	2	Nitrile
HF60PP005A	RPF009UY660S0050S	60	5	Silicone
HF60PP005B	RPF009UY660S0050V	60	5	Fluorocarbon
HF60PP005C	RPF009UY660S0050E	60	5	EPDM
HF60PP005D	RPF009UY660S0050N	60	5	Nitrile
HF60PP010A	RPF009UY660S0100S	60	10	Silicone
HF60PP010B	RPF009UY660S0100V	60	10	Fluorocarbon
HF60PP010C	RPF009UY660S0100E	60	10	EPDM
HF60PP010D	RPF009UY660S0100N	60	10	Nitrile
HF60PP015A	RPF009UY660S0150S	60	15	Silicone
HF60PP015B	RPF009UY660S0150V	60	15	Fluorocarbon
HF60PP015C	RPF009UY660S0150E	60	15	EPDM
HF60PP015D	RPF009UY660S0150N	60	15	Nitrile
HF60PP025A	RPF009UY660S0250S	60	25	Silicone
HF60PP025B	RPF009UY660S0250V	60	25	Fluorocarbon
HF60PP025C	RPF009UY660S0250E	60	25	EPDM
HF60PP025D	RPF009UY660S0250N	60	25	Nitrile
HF60PP040A	RPF009UY660S0400S	60	40	Silicone
HF60PP040B	RPF009UY660S0400V	60	40	Fluorocarbon
HF60PP040C	RPF009UY660S0400E	60	40	EPDM
HF60PP040D	RPF009UY660S0400N	60	40	Nitrile
HF60PP070A	RPF009UY660S0700S	60	70	Silicone
HF60PP070B	RPF009UY660S0700V	60	70	Fluorocarbon
HF60PP070C	RPF009UY660S0700E	60	70	EPDM
HF60PP070D	RPF009UY660S0700N	60	70	Nitrile



Quality Note

Pall-Fit High Flow filter elements are manufactured at Pall sites that are ISO9001 certified. They are traceable back to manufacturing lots by date code printed on the bag label. Each lot is integrity tested by reverse bubble point test method.



Pall Corporation

25 Harbor Park Drive
 Port Washington NY 11050
 +1 516 484 3600 telephone
 +1 800 289 7255 toll free US

Portsmouth - UK
 +44 (0)23 9233 8000 telephone
 +44 (0)23 9233 8811 fax

www.pall.com/contact


Filtration. Separation. Solution.SM



Visit us on the Web at www.pall.com

Pall Corporation has offices and plants throughout the world. For Pall representatives in your area, please go to www.pall.com/contact

Because of technological developments related to the products, systems, and/or services described herein, the data and procedures are subject to change without notice. Please consult your Pall representative or visit www.pall.com to verify that this information remains valid.

© Copyright 2018, Pall Corporation. Pall and  are trademarks of Pall Corporation. ® Indicates a trademark registered in the USA. Better Lives. Better Planet and *Filtration. Separation. Solution.SM* are service marks of Pall Corporation. *3M is a registered trademark of 3M Company.

